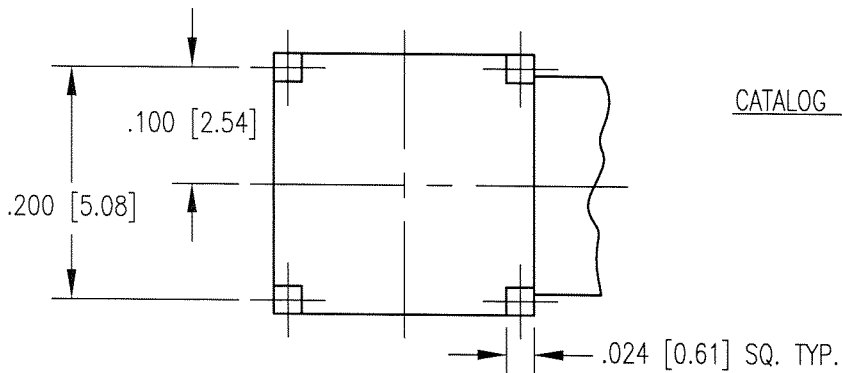
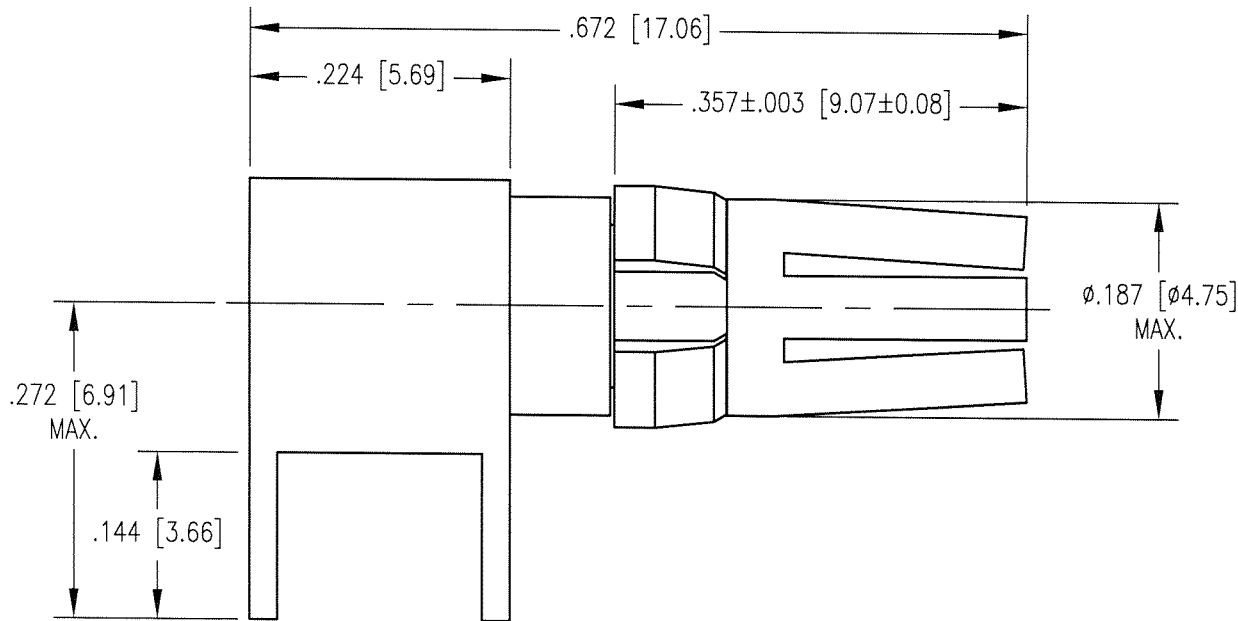
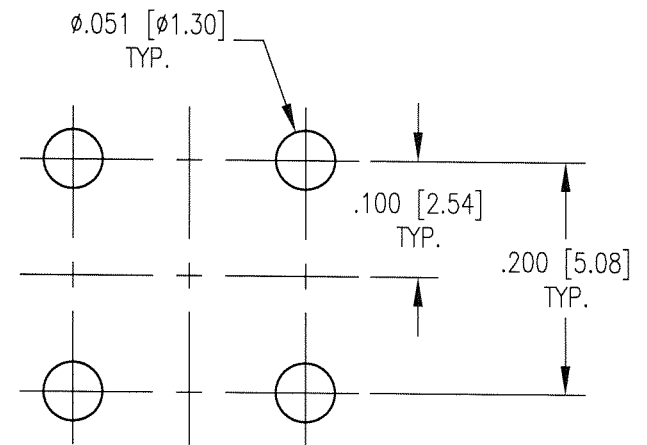


DWG. NO.		50230	
REV	DESCRIPTION	BY DATE	APPD
E	ECR 7042	10/12/01	JEM



CATALOG NO. 01S60634232



RECOMMENDED MOUNTING HOLE

NOTES:

1. MATERIALS:

FRONT BODY: COPPER ALLOY
 REAR BODY: BRASS PER ASTM B16
 CLIP RING: BERYLLIUM COPPER PER ASTM B194

2. FINISH:

BODY: .000030 MIN. GOLD PER MIL-G-45204 OVER
 .000050 MIN. NICKEL PER QQ-N-290
 CLIP RING: .000100 MIN. NICKEL PER QQ-N-290 OVER
 COPPER FLASH

PER ASME Y14.5M-1994 UNLESS OTHERWISE SPECIFIED: DIMENSIONS ARE IN INCHES [MM]		Litton	
TOLERANCES: DECIMALS .XX ± .01/0.254 .XXX ± .005/0.127 ANGLES ± 2'		Winchester/Retconn 400 Park Road Waterford, Connecticut 06795	
SCALE: 6:1		TITLE DIN HIGH POWER R/A RECEPTACLE 40 AMP	
CUSTOMER DRAWING			
DRAWN	DATE	CHECKED	DATE
JWH	9/18/01	JED	9/27/01
APPROVED	DATE	APPROVED	DATE
JEM	9/27/01	KJT	9/27/01
A	50230	SHT.	OF
		1	1
		REV.	
		E	